

## PRODUCT SPECIFICATION

# Series GU

Precision Wirewound Potentiometer - 7/8" (22mm)

RoHS and REACH Complaint and contain no Conflict minerals.

These Products meet Military Specifications, Custom made parts available on request.



## Electrical Specification

**Resistance range, standard values:** 100  $\Omega$  to 100 K $\Omega$

**Capability range:** 10  $\Omega$  to 200 K $\Omega$

**Standard toll:**  $\pm 5\%$

**Linearity independent:**  $\pm 0.25\%$

**Noise:** 100  $\Omega$  ENR

**Rotation(electrical & mechanical) :** 3600° + 10%

**Power rating @70°C:** 2.0 watts

**Insulation Resistance:** 1000 M $\Omega$  minimum 500 VDC

**Dielectric Strength:** 1000 Vrms minimum 60 HZ

**Absolute minimum resistance :** not to exceed linearity x total resistance or 1 $\Omega$ , whichever is greater

**Tempco:** 20 ppm/°C (standard values, wire only)

**End Voltage:** 0.25% of total applied voltage, maximum

**Phasing:** CCW end points - section 2 phaed toi section 1 within  $\pm 2^\circ$

**Taps :** center tap only

## Enviromental Specification

**Vibration:** 15 g thru 2000Hz

**Shock:** 50g

**Rotational life:** 1 000 000 cycles

**Load Life:** 900 hours

**Operating temperature range:** -55° C to  $\pm 125^\circ$  C

**Moisture resistant salt spray:** 96 hours

## Mechanical Specification

**Toque (maximums): starting**

**Section 1:** 0.5 oz - in (36gm - cms)

**Section 1:** 0.9 oz - in (65gm - cms)

**Weight (maximums)**

**Section 1:** 0.75 oz (21.26 gm)

**Section 1:** 1.25 oz (35.44 gm)

**Toque (maximums): starting**

**Section 1:** 0.4 oz - in (28.80gm - cms)

**Section 1:** 0.7 oz - in (50.40gm - cms)

**Stop strength:** 1.25 oz - in (static)  
(5.4Kgm - cm)

**Ganging:** 2 sections maximum

## Features

- special resistance tolerance to 1%
- rear shaft extension and support bearing
- non turn lug
- insulating plastic shaft
- special independent linearity to 0.75%
- dual gang configuration and concentric shafts
- high torque and center tap
- special markings and front shaft extensions
- servo unit available and slipping clutch

## PRODUCT DRAWINGS

# Series GU

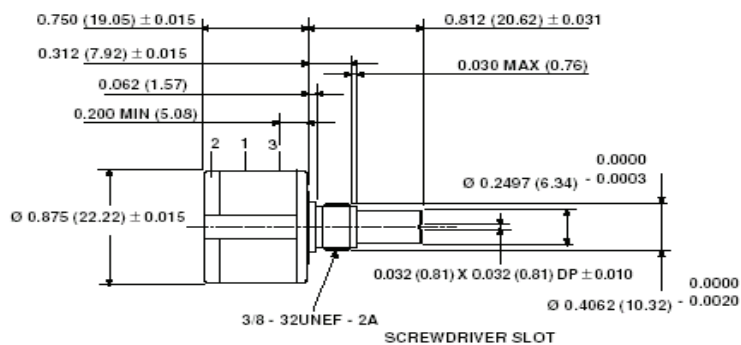
Precision Wirewound Potentiometer - 7/8" (22mm)

RoHS and REACH Complaint and contain no Conflict minerals.

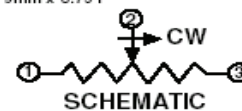
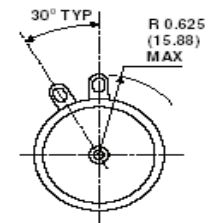
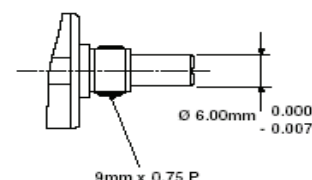
These Products meet Military Specifications,  
Custom made parts available on request.

## Drawing

### SINGLE SECTION DIMENSIONS in millimeters



### METRIC



Mounting hardware, washer and panel nut, nickel plated